

PARISH PLAN

Maids Moreton 2004

Contents

I.F. Cover	What is a Parish Plan?
Page 1	Why have a Parish Plan for Maids Moreton?
Page 2	Map of Maids Moreton
Page 3 - 4	What are some facts about Maids Moreton?
Page 5	How did the Parish Plan come about?
Page 6	What do we think about Maids Moreton?
Page 7 - 12	What are the findings and actions of the Parish Plan?
Page 13 - 15	The Action Plan
Page 16	What next?
I.B. Cover	Acknowledgements

What is a Parish Plan?

Parish Plans are part of a national scheme to strengthen and improve village life. Through a variety of ways the opinions and suggestions of everyone living and working in a village/civil parish are sought. These opinions and suggestions cover current village issues and those issues affecting the future. They are summarised in an Action Plan which lists the major issues and suggests practical ways of tackling them.

Parish Plans are organised through Parish Councils, and are sometimes delegated to another group. They are government funded and supervised by the Countryside Agency. To date, over 1,000 Parish Plans throughout England have been completed or are underway.

Why have a Parish Plan for Maids Moreton?

Over time villages change, some slightly and some dramatically. Change is coming to Maids Moreton (population 940) in north Buckinghamshire. We want to be prepared for it, and this is why we embarked on a Parish Plan.

- Aylesbury Vale District Council will be sending a Conservation Officer in 2005/6 to assess parts of Maids Moreton as Conservation Areas. If adopted, these buildings, features and open spaces will have both protection and restriction. Our Parish Plan (which includes a forthcoming Village Design Statement) will give useful information to the Conservation Officer, and help reflect local opinion as to what the Conservation Areas could be.



The view from Wellmore (Happy Snappy photo competition)

- 200 houses will be built soon on the fields along the Moreton Road. Although the site is in Buckingham, it is less than half a mile from the Buckingham/Maids Moreton boundary. The impact of cars and other vehicles, children and schools, needs of the elderly, sport and leisure activities, and demands on village facilities will all affect Maids Moreton from 2005 onwards. At present, Aylesbury Vale's Planning Department is assessing these factors.

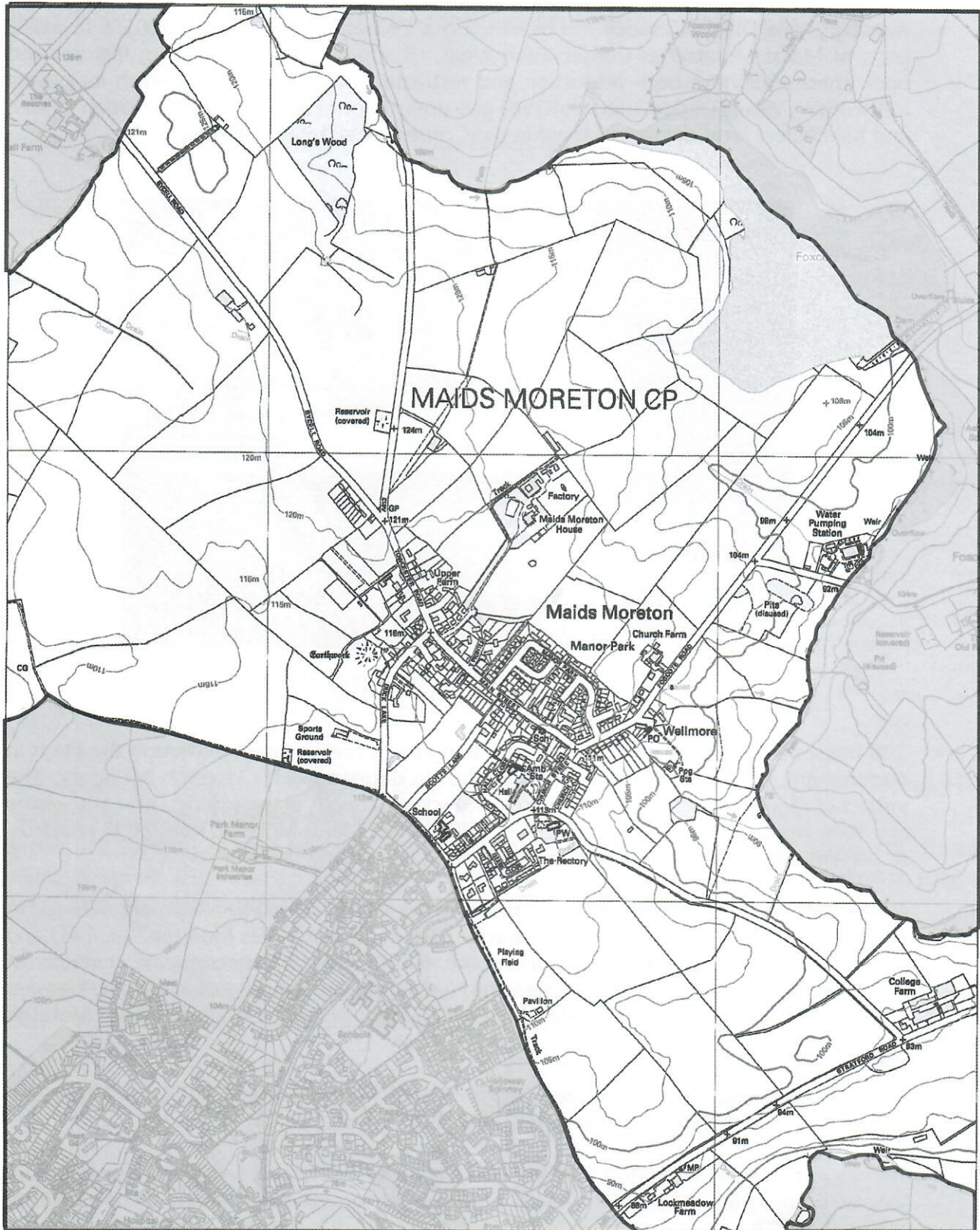
AV's District Local Plan (2004), when considering the Moreton Road development, referred to the importance of "maintaining the character and identity of Maids Moreton" (p. 141) and stated that "sensitive development of the site will not threaten the separate character of Maids Moreton" (p. 142). However, the Local Plan states the possibility of further development after 2011 of the Moreton Road field which lies adjacent to the Buckingham/Maids Moreton boundary.

Preserving a separate village identity was considered 'Very important' (69%) or 'Important' (26%) in the Parish Plan questionnaire to village residents.

- To the south-east of Maids Moreton the city of Milton Keynes is likely to expand into Aylesbury Vale with an additional 60,000 houses, according to government targets. The centre of Milton Keynes is a 20 minute drive from Maids Moreton. It is too early to detail how the city expansion will affect our village, but increased traffic must be one result. The Parish Plan should help focus local interest in the knock-on effects of the growth of Milton Keynes.

Ordnance Survey Map of Maids Moreton

Scale 1: 10,000



© Crown copyright. All rights reserved. License no: 100042845.

What are some facts about Maids Moreton?

Geographical

The civil parish of Maids Moreton covers 458 hectares/1030 acres. It slopes down to the River Great Ouse on its south-east boundary. The soil is a mixture of clay and gravel, and in previous centuries had many springs and a high water table – hence the original place name of Moreton. There is still a mixture of pasture and arable land under the management of five farms. Little woodland remains.

Historical

There has been human settlement in the area since at least the Iron Age. A ring ditch, now ploughed out, existed by the banks of the River Great Ouse, and nearby was found an iron axe, agreed to be the best of its kind in Europe. The Romano-British farmed in this area, and pieces of their pottery have been found in the fields of the parish. The Anglo-Saxons probably settled permanently on the south-facing slopes above the river, and were responsible for the origin of our village which is listed in Domesday Book as "Mortone".

The villagers of Moreton adopted the prefix "Maidenes" in gratitude to two unmarried sisters who were benefactresses and re-built St. Edmund's Church in c.1450.



St. Edmund's Church

Although primarily an agricultural village, Maids Moreton always benefited from being one mile from Buckingham, the county town of Buckinghamshire until the eighteenth century. Consequently, influential people were attracted to the village. The main manor belonged to All Souls' College from 1442, and Dr. George Bate (physician to Charles I, Cromwell and Charles II) and Baroness Kinloss (the daughter of the last Duke of Buckingham) lived here. Several large houses were built, resulting in domestic and agricultural jobs being easily available.

Social

Changes in agricultural life since the nineteenth century have resulted in the village developing into a desirable place to live: well situated and accessible, with a broad mixture of housing, and jobs to be found in Maids Moreton, Buckingham, Milton Keynes, London etc.

Maids Moreton has a parish church, school for children aged 4-7 years, playgroup, nursery school, village hall, business park, two pubs, two homes for the elderly, various businesses, allotments, playing field and rugby pitch. The shop/post office closed in December 2003. There are many sports, social and church groups which play a crucial role in the well-being of the community.

The 2001 Census Data gave statistics which are relevant to housing, health, transport and leisure issues for Maids Moreton:

Of 368 households	88 (24%)* were pensioner households 91 (25%) had dependent children 46 (13%) had no car or van 143 (39%) had one car or van 179 (49%) had 2 or more cars or vans 106 (29%) had a limiting long-term illness
Of 372 dwellings	293 (79%) had owner-occupied tenure 75 (20%) had rented tenure
Of 663 people aged 16 – 74	454 (68%) were employed 15 (2%) were unemployed 181 (27%) were economically inactive

*% figures are rounded. The population of the parish in 2001 was 940.

A teenage resident, Matthew, decided to explore the provocative question "To what extent has Maids Moreton become one of Buckingham's estates?" as part of his GCSE coursework. He wrote to his local Member of Parliament, John Bercow, whose reply contained the following:

"There is a thriving community in Maids Moreton, and with the help of the Parish Council, I think it is safe to say that everything will be done to try to maintain the village's individuality.

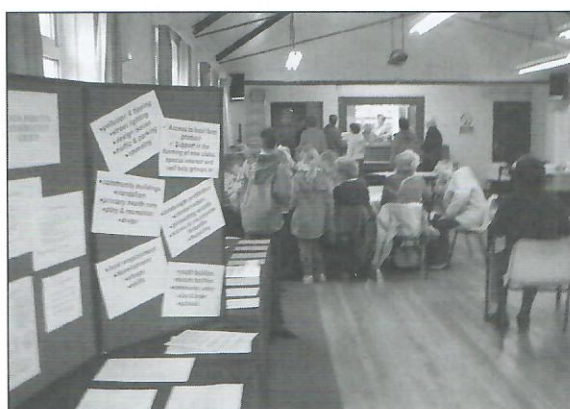
While a certain amount of development must take place, especially in the South-East where there is an increasing demand for housing, large-scale development must be carefully planned: taking into account existing communities, infrastructure needs as well as the threat to greenbelt and greenfield land. Please be assured that I will continue to monitor development in the Maids Moreton and wider area." (John Bercow MP, 19th September 2003)

How did the Parish Plan come about?

The Parish Plan has been produced in just over a year. The process of both communicating our objectives and consulting people about their views involved a team of twelve committed people formed from the Maids Moreton Conservation Group (MMCG). The team worked in conjunction with Maids Moreton Parish Council, and was regularly helped by Bucks Community Action.

Communication aspects included:

- 6 newsletters delivered to all households
- open MMCG monthly meetings
- articles and photographs in the church magazine and local newspaper
- production of a 20 page booklet/directory about Maids Moreton
- liaison via the church, school, pubs and shop
- presentations to the Parish Annual Meeting and Women's Institute



CLOCKWISE: Parish Event in the Village Hall;
Main Street (Happy Snappy photo competition);
Front of the Village Hall (Happy Snappy photo
competition).



Consultation aspects included:

- 3 Open Days in the Village Hall
- 2 questionnaires to every household were delivered/collected. The first questionnaire had 33% responses from a total of 368 households, and was composed mainly of open questions. The second questionnaire focussing on the issue of a shop/post office had 90% responses.
- 'Happy Snappy' photographic competition involving village residents
- stalls at school and church fetes
- 1:1 interviews with the housebound, businesses and organisations
- consultations with Friend at Hand, Aylesbury Vale District Councillor, AVDC officers, GCSE student, Maids Moreton School governors

There were three public opportunities for the draft Parish Plan to be reviewed and commented upon, and final copies were delivered to every house in Maids Moreton.

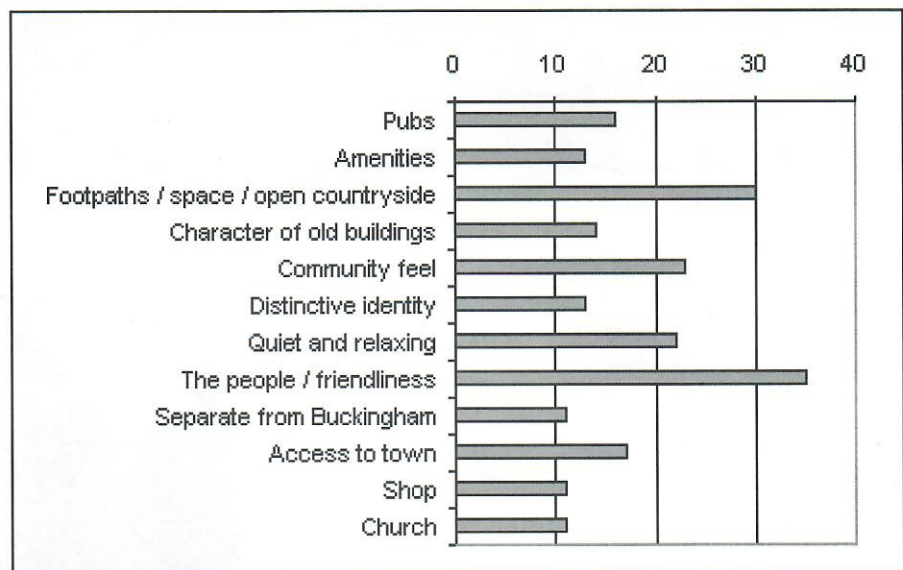
What do we think about Maids Moreton?

Below are some of about 250 comments written anonymously at one of the three Parish Plan Open Days:

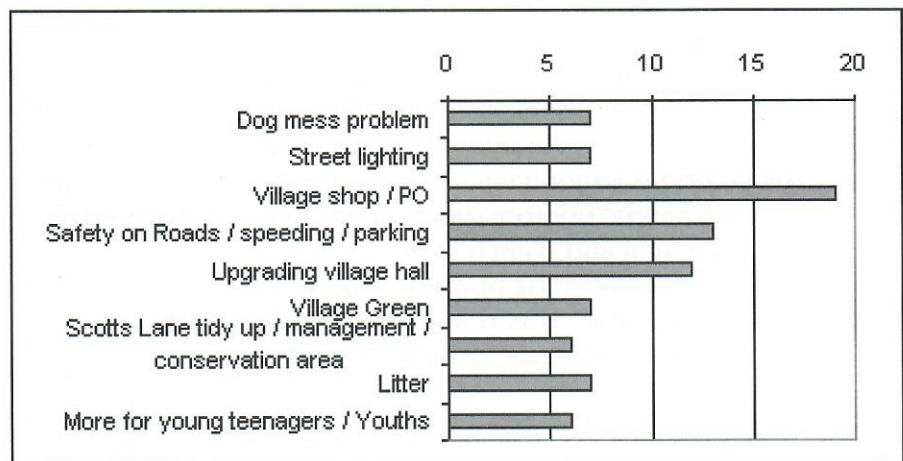
- The community spirit in this village is excellent. Kindnesses abound.
- There's not enough for local youngsters to do to keep them active. They are Maids Moreton's future after all.
- How about selling local people's fruit and veg?
- I like fields in the heart of the village – not just surrounding it.
- The street lighting is not suited to a village, it's more suited to a motorway.
- Cheaper housing is needed for younger people and retirees to stay living in the village.
- There's a speed problem through the village. It's a rat-run to Milton Keynes.
- Another hoop on the basketball court would be cool.
- We need to keep our shop and post office.
- I like the allotments.
- When someone moves away they could buy the next 3 month's subscription to the church magazine for the new person moving in.

Although only a sample, these comments are largely reflected in the responses given in the Parish Plan questionnaire to the questions:

What 3 things do you like about the village?



What 3 things should be improved in the parish?



What are the findings and recommendations of the Parish Plan?

Four working groups have emerged from the views and suggestions gathered from Maids Moreton residents. The groups are taking the issues forward under the headings:

Village Facilities
Highways
Environment
A Village Design Statement

VILLAGE FACILITIES

Findings

- The village shop/post office closed at the end of 2003. A recent second questionnaire about this facility achieved a 90% return rate, and 95% of residents said they would like a shop/post office again. A number of local people have offered to help either on a paid or voluntary basis. Three potential sites are currently under review.
- The Village Hall is in need of improvements, in particular the kitchen and toilet area. Access is difficult for the elderly, and impossible for those using wheelchairs. The Village Hall Committee has applied for a grant from AVDC to build a ramp and porch and rewire the Hall. In addition, Landfill Tax and National Lottery grant applications are being prepared to build a rear extension to the Hall.
- The residents of the village expressed a wish to see improvements to the recreation facilities for all ages. Support has been canvassed for the feasibility of running a physical activity class such as yoga or keep-fit. The level of support obtained is now high enough for a suitable teacher to be sought, and it is hoped that classes can start in the Village Hall in the autumn.
- A number of residents requested to have a tennis court(s) available within the village. The three public courts in Buckingham are considered insufficient for the size of population.
- Facilities were requested for the teenagers of the village. Two table tennis afternoons were held in April and May 2004. The attendance level was rather low, however further sessions are intended.

Recommendations/actions

- 1. Invite organisations such as the Rural Post Offices, Community Action Group and Village Retail Services Association to visit the three potential sites for a shop/post office and advise on their potential use.
- 2. Investigate the possibility of grants for a shop/post office eg. set-up grant with Rural Post Offices.
- 3. Follow-up offers of help from residents.
- 4. Support the Village Hall Committee's plans for enlarging and improving the premises.

- 5. Professional associations to be approached to find a suitable teacher to offer a physical activity class in the Village Hall on a weekly basis.
- 6. Investigate the possibility of building a tennis court(s), in line with AVDC's Sports & Leisure policy.
- 7. Have further discussions with teenagers regarding their choice of leisure activities. Future table tennis sessions to be included within the planning.

HIGHWAYS

Findings

- Aylesbury Vale's District Local Plan (2004) acknowledges that the increased traffic from the new estate on the Moreton Road will bring "the potential for rat-running on unsuitable routes" – which implies the use of Maids Moreton roads and lanes to access Milton Keynes.
- 56% of villagers opted for restrictions to speeding in the Questionnaire. Cars speed on the approach roads into the village (A413 from Towcester, Mill Lane from A422/Milton Keynes and the minor road from Foscott). No traffic count has been done in recent times nor a speeding survey. The Parish Council is working on improved speeding restrictions in the Towcester Road. Speeding up and down Main Street is also a hazard, especially by through-traffic taking a short cut.
- 69% of respondents opted for a resolution to parking problems at Maids Moreton School and Buckingham Rugby Club.

There has been improvement to congested traffic and parking by Maids Moreton School since their adoption early in 2004 of a Travel Plan. The 'Crocodile Trail', 'Go for Gold' scheme, and a Biking Basics Course are encouraging the school community to avoid using cars. At the recent 'Walk to School Week' there was almost 100% positive response. A school governor has liaised with the Parish Council and Maids Moreton Conservation Group throughout.



Maids Moreton School prepares a 'Crocodile Trail'

- 34% of respondents said they use/need local public transport, and 55% said they did not. Requests were made for bus timetables to be displayed on bus-stops, for a bus shelter in Main Street, and for services later in the afternoon and on Saturdays.
- There is both old-style white street lighting in the village and newer yellow lighting. Some people like a lot of light for security reasons, and others complain of light pollution in rural areas. Some parts of the village need lighting where there is none.
- A Footpaths Group has been systematically walking the parish paths to acquaint people with the network of routes.

Recommendations/actions

- 8. Maids Moreton Parish Council and Conservation Group will resist changes to local highways which will increase through-traffic in the village, especially to Milton Keynes.
- 9. Continue to liaise with the Traffic Enforcement Officer to enforce the new traffic calming measures due for completion by the end of 2004. Monitor speeding in Towcester Road and Main Street.
- 10. Continue to support Maids Moreton School's Travel Plan by backing the next stage of the Plan, and publicising in Maids Moreton Conservation Group newsletters.
- 11. Bring illegal parking on pavements and footpaths to the attention of the Police Liaison Officer.
- 12. Improve the bus service between the village and Buckingham by better timetables, a bus shelter in Main Street, and increased journeys.
- 13. Apply for lighting in dark areas of the village eg. Towcester Road, the car park of the Playing Field.
- 14. Check the parish footpaths in detail, write a report of each for the Highways Department of Bucks County Council.

ENVIRONMENT

Findings

- Public open spaces in Maids Moreton include the Playing Fields, Rugby Pitch, Rose Garden and the Village Green. There have been suggestions that more use could be made of the Green for village events. Of the 74% of questionnaire respondents who offered ideas about the local environment, 53% focused on open spaces in the village and the Scotts Lane meadows.
- Two meadows either side of Scotts Lane form a natural break between the built-up areas of Maids Moreton and Buckingham (see map p. 2). Two Public Inquiries of 2001 and 2003 resulted in refusal of planning permission for development of the meadows, in accordance with local opinion and that of AVDC's Planning Department.

Aylesbury Vale's District Local Plan (2004) states;

"The Council seeks to preserve the separate identities of neighbouring settlements or communities. The Council will resist development that would compromise the open character of the countryside between settlements, especially where the gaps between them are already small. It is acknowledged that in some cases, whilst neighbouring communities may still have separate characters or identities, the built-up areas of those settlements are already linked. The Council will resist further development that would result in consolidation of such linkage and threaten what remains of the separate character or identity of the communities." (p. 172 and RA.2 p. 173)

Scotts Lane is used frequently by mothers walking their children to the village school and playgroup, by teenagers walking to school in Buckingham, by dog-owners etc. In addition, Scotts Lane forms part of a circular walk around the village, and so has a leisure and social use.

- It is considered desirable to protect Scotts Lane from urban-style development such as pavements, fencing, road-widening. Existing wildlife in the lane and adjoining meadows should be safeguarded. These include a bat colony, badger set and great-crested newts. Better management of the grass verges, trees, overgrown bushes and ditches either side of the lane would reduce danger from overhanging dead trees and enhance the beauty of the lane.

An application has been made by Maids Moreton Conservation Group to Living Spaces to provide funds for professional clearance of undergrowth along Scotts Lane, followed by planting of bluebells and primroses by village volunteers. Permission to plant has been obtained from the Highways Department of Bucks County Council.

- People using wheelchairs or electric buggies report many pavements in the village have no dropped kerbs for access. Maids Moreton has two residential homes for the elderly with 70 residents. It is considered desirable to improve wheel access to the Scotts Lane circular walk around the village by introducing sloping or dropped kerbs. Enquiries have been made to AVDC and the Highways Department of Bucks County Council.
- Concern was expressed about dog mess in certain "black spots". There are three dog bins, each of which costs the Parish Council £200 to purchase and £100 annually to be emptied. Some dog owners should be firmly reminded to clear up mess and use the bins provided.
- Unsightly litter was another issue for concern, especially on the approach roads to the village. Maids Moreton Conservation Group organised a Litter Pick in March 2004 in conjunction with AVDC, and 37 sacks of litter were taken away as well as 25 dumped Yellow Pages books and 13 car tyres.
- AVDC refuse lorries collect plastic and newspapers fortnightly, but there is no provision for recycling glass.

Recommendations/actions

- 15. Resist future development of Scotts Lane meadows in line with the recommendations of H.M. Inspector's Reports 2001 and 2003, and the recommendations of AV's District Local Plan (2004) in order to safeguard the open green space between the village and Buckingham. Encourage the re-use of the meadows for the grazing of animals.
- 16. Protect and improve the environment of Scotts Lane by continuing to liaise with the Highways Department of Bucks County Council regarding improved upkeep of the grass verges, and re-introducing bluebells and primroses to grow along the verges.
- 17. Develop a circular walk around Maids Moreton with users of wheelchairs and electric buggies in mind. Replace awkward high kerbs with dropped kerbs or slopes.
- 18. Promote the use of dog bins by increased publicity eg. church magazine and Maids Moreton Conservation Group newsletters.
- 19. Raise awareness of dangerous and unsightly litter by an annual litter pick each spring. Reinstall the litter bin by Maids Moreton School.
- 20. Look for a suitable site for a glass recycling position.

VILLAGE DESIGN STATEMENT

Findings

Identity and conservation are important issues for the Maids Moreton community. The analysis of the first questionnaire showed that

- 95% of the community felt that it is "important" or "very important" to keep Maids Moreton as a separate identity.
- 94% of the community felt that it is "important" or "very important" that future development should fit into the architectural character of the village.
- 69% of the community felt that small parts of the village should become Conservation Areas.

There is continuing pressure from the Government for more houses to be built, and the expansion of Buckingham along the Moreton Road is already planned. We need to ensure that development within the village maintains the separate village identity, and complements the existing architectural character. In addition, we should identify important architectural and green space areas that should be conserved for the future.

To the question "Is the housing mix adequate in the village and if not what type of housing does it need?" 26% of questionnaire respondents said that there should be an increase in "cheaper homes for locals to rent or buy". This response indicates that there may be insufficient low-cost housing for rent or shared ownership to enable local people to remain in the village.

Recommendations/actions

- 21. Produce a Village Design Statement accepted by AVDC as a Supplementary Planning Document. This document would identify the key features that should be included in any new buildings to ensure the preservation of the village's character. In addition, while compiling the VDS, identify potential Conservation Areas in the village to aid the future work of the Conservation Officer and Maids Moreton Parish Council.



Scotts Lane in Winter

- 22. Identify affordable housing needs through a more detailed survey dealing with this specific issue. Take appropriate action based on the results. For instance, if a need was clearly identified, work with a housing association and the Parish Council to plan affordable houses.

MAIDS MORETON - ACTION PLAN

Issue*	Vision	Action	Partners**	Priority	Time Scale
VILLAGE FACILITIES					
Village shop/post office 1a, 1b, 25	To bring back a village shop/ post office and establish a good business with community support	1. Obtain advice and support from professional bodies 2. Investigate grants 3. Pursue offers of local help	BCA Rural Post Offices PC / MMCG Village Retail Services	High	Short
Village Hall facilities 2a, 2b, 12, 25	The Village Hall should be expanded and up-dated, with disabled access	4. Support the Village Hall's Committee's grant applications eg. through the Parish Plan	Village Hall Committee BCA AVDC MMCG	Medium	Medium
Improvements for recreation 3, 6	Healthy lifestyles should be promoted locally Tennis courts	5. Continue efforts to find a suitable yoga teacher 6. Investigate tennis courts	MMCG Village Hall Committee AVDC / PC / MMCG	Medium Low	Short Long term
Youth activities 5b, 7a, 7b, 8a, 8b	Local activities for teenagers are a priority	7. Offer further table tennis sessions and ask preferences	MMCG BCA	Medium	On-going
HIGHWAYS					
Through-traffic 19, 21	Development in Buckingham and Milton Keynes should not impact on village lanes	8. Increased through-traffic will be resisted	PC / MMCG	Medium	Long term
Dangerous speeding 19, 25	The speed of cars should be properly regulated	9. Monitor speeding in Main Street and Towcester Rd.	Traffic Enforcement Officer PC / MMCG	High	Medium

Issue*	Vision	Action	Partners**	Priority	Time Scale
Traffic congestion 20, 25	Resolution to traffic congestion outside MM School/Healthy lifestyles	10. Continue liaising with MM School to promote their Walk to School policy	MM School PC / MMCG	Medium	On-going
Pavement and footpaths 2b, 12, 20, 25	Access to pavements and footpaths at all times	11. Investigate illegal parking on pavements & footpaths	Police Liaison Officer PC / MMCG	High	On-going
Bus services 10d	Bus services should cater for local needs	12. Improve bus information & services	PC / MMCG Local bus companies	Medium	Medium
Street lighting 13, 17, 25	Street lighting should be adequate and suitable	13. Improve street lighting in inadequately lit places	PC/MMCG	High	Medium
Footpaths 11, 16, 24	All footpaths should be in a good state of repair/access	14. Check state of footpaths. Report to Highways Dept.	Highways Dept. PC / MMCG	Medium	Medium
ENVIRONMENT					
Protection of Scotts Lane and meadows against development 5a, 11, 15, 21, 23, 24	Conserve the area for its unique position, nature and accessibility	15. Encourage the use of the meadows for pasture	PC / MMCG	Medium	Long term
Grass verges of Scotts Lane 15, 25	Ensure the lane is a haven for wildlife and is beautiful to walk along	16. Re-introduce bluebells and primroses. Maintain the trees and bushes effectively. Grant already applied for	Bucks County Council (Highways) Living Spaces MMCG	High	Medium/ Long term

Issue*	Vision	Action	Partners**	Priority	Time Scale
Development of a circular walk, including dropped kerbs for wheelchairs and buggies 2b, 6, 12, 15	An accessible circular walk, taking in Scotts Lane & the two homes for the elderly, would benefit all	17. Liaise with partners to improve kerbs. Publicise well	Bucks County Council (Highways) PC / MMCG	High	Medium
Dog mess 11, 18, 25	Abolish dog mess, especially near the school & playgroup	18. Increase awareness of dog bins by better publicity	PC / MMCG	Medium	On-going
Litter & dumping 11, 18, 25	Litter and dumping should be minimal	19. Establish an annual litter pick each spring	PC / MMCG	Medium	On-going
Recycling 1b	A site for recycling glass is required	20. Investigate a suitable site. Publicise well	PC / MMCG	High	Long term
VILLAGE DESIGN STATEMENT					
Identity and conservation 21, 22, 23	Maintain the village's identity and conserve key areas and characteristics of the village.	21. Produce a Village Design Statement for planning guidance and to support the future designation of conservation areas in the village.	AVDC PC / MMCG	High	Medium June 2005
Affordable Housing 14b	Have sufficient low cost housing for rent or shared ownership to enable locals to remain in village.	22. Identify affordable housing needs through a survey. Take appropriate action based on the results.	PC / MMCG BCA	High	Medium June 2005

Notes:

* The reference numbers included under this heading relate to the questionnaire analysis.

** Abbreviations for partners are:

BCA: Bucks Community Action, PC: Parish Council, MMCG: Maid Moreton Conservation Group, AVDC: Aylesbury Vale District Council.

What next?

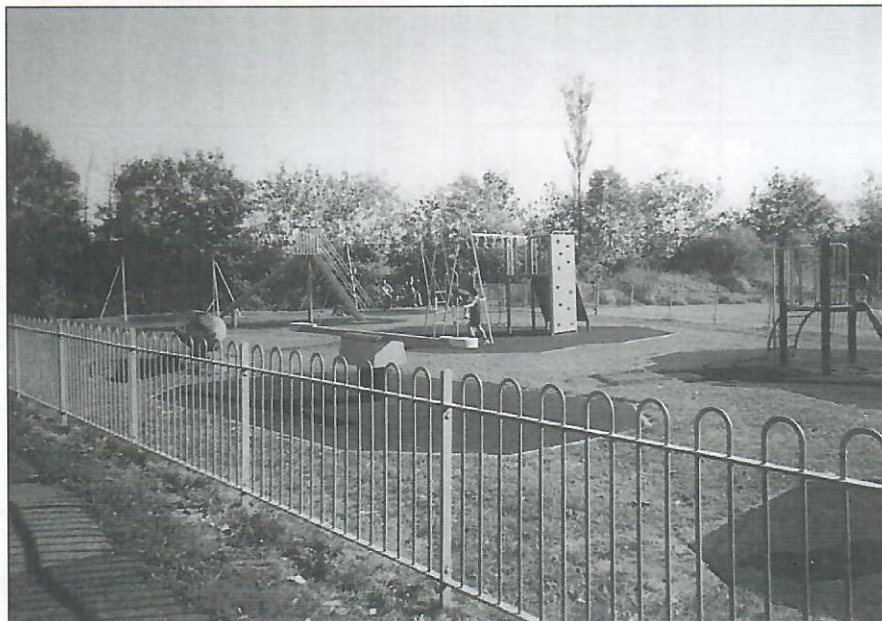
At the time of compiling this document called our Parish Plan we are very aware that these two weeks of pulling together all our work to date, all our types of evidence, and trying to summarise everything in 20 pages is just a snapshot of the whole Parish Plan process. Very little stays the same for long. Many good 'Action' projects have already started, and the Action Plan contains many more excellent recommendations to work on and turn into reality. Some will take several years before they come to fruition. But in the short term we hope that this Parish Plan will be accepted by Aylesbury Vale District Council as a Supplementary Planning Document, and used by both AVDC and Maids Moreton Parish Council to benefit the village.

In his Geography GCSE project (see p.4) Matthew concluded;

"From the evidence that I have collected I think that Maids Moreton is viewed as a separate entity to Buckingham by residents and politicians alike.

To extend my project I think that I would look in more detail at the opinions of different people. I would also examine the possibilities of working more with Maids Moreton Conservation Group to help preserve Maids Moreton's independence and identity as separate from Buckingham's – as that seems to be what the majority of residents have said that they believe should happen".

We believe the Parish Plan process is proving a "good thing" for this village. People from all age groups are being involved, and taking a renewed interest in their community. Village issues are being discussed with a new fervour. New volunteers have come forward to join long-serving volunteers, such as Parish Councillors. Undoubtedly there is much more liaison, networking and communication than before. In this document we hope that the community of Maids Moreton has seen itself reflected: that it has a clearer vision of where it's at now, and where it wants to go. We are the future.



The Playing Field (Happy Snappy photo competition)

Statement on behalf of Maids Moreton Parish Council

On behalf of Maids Moreton Parish Council may I say thank you to the members of the Conservation Group for their work in producing the Parish Plan.

The Parish Council has been involved with the various working groups during the preparation of the Parish Plan, and unanimously supports and endorses it. The Plan has been based upon the results of questionnaires and meetings with Maids Moreton residents. It sets an agenda for maintaining and improving the village through the twenty two recommendations of the Action Plan.

I hope everyone will feel able to give it their whole-hearted support.

Peter Dungate
Chairman
Maids Moreton Parish Council
July 2004

Acknowledgements

Maids Moreton Conservation Group, especially Pam Brandon, Peveril Carver (Parish Councillor), Gill Craik, Mark Gadd, Peter Harman, Jean Hobbs, Kim Hodge, Val Keen, Pauline Kneafsey, Iris Mobbs, Lyn Robinson, Peter Saunders (Parish Councillor), Bernard Stopps

Maids Moreton Parish Council
Nigel Carrick, Buckinghamshire Community Action
The Countryside Agency
Moreton Press
Ordnance Survey
Cllr. Alison Walsh (Aylesbury Vale District Council)
Highways and Planning Departments of Aylesbury Vale District Council

We thank the above for their help with the Parish Plan process to date. We also thank the many volunteers (unfortunately too numerous to name) who help with events, distribution and support. Thank you all very much.

Enquiries: Maids Moreton Conservation Group (01280) 813014

This Parish Plan was produced
with financial support from
the Countryside Agency



